



1.800.856.0237 60 YEARS CONTINENTALLABS.COM

COMPANY : Freelance Drilling
 WELL : Target # 21-H
 COUNTY : Harris
 STATE : Texas
 UNIT : 56

API # : 89-223-25065
 AFE # : 2416425
 RIG NAME : GP 206
 UNIT MANAGER : T. Smith
 NIGHT LOGGER : K. Mikes

ELEVATIONS
 KB : 241'
 DF : 202'
 GL/WD : 432.9'

LOGGING STARTED : 10/1/14
 LOGGING FINISHED : 10/9/14
 DAYS LOGGED : 9
 SPUD DATE : 9/26/14

MD DEPTH : 10300'
 TVD DEPTH : 10221'
 START DEPTH : 3,570'
 END DEPTH : 10300'

REMARKS
 FARGO FIELD
 50u=1%Methane / Hydrogen F.I.D. / CG Reported Over Background

LITHOLOGY

Anhydrite		Chert		PepperShale	
Ash		Clay		Sand	
Bentonite		Coal		Salt	
Calcite		Dolomite		Sandstone	
Cement		Limestone		Shale	
Chalk		Marl		Siltstone	

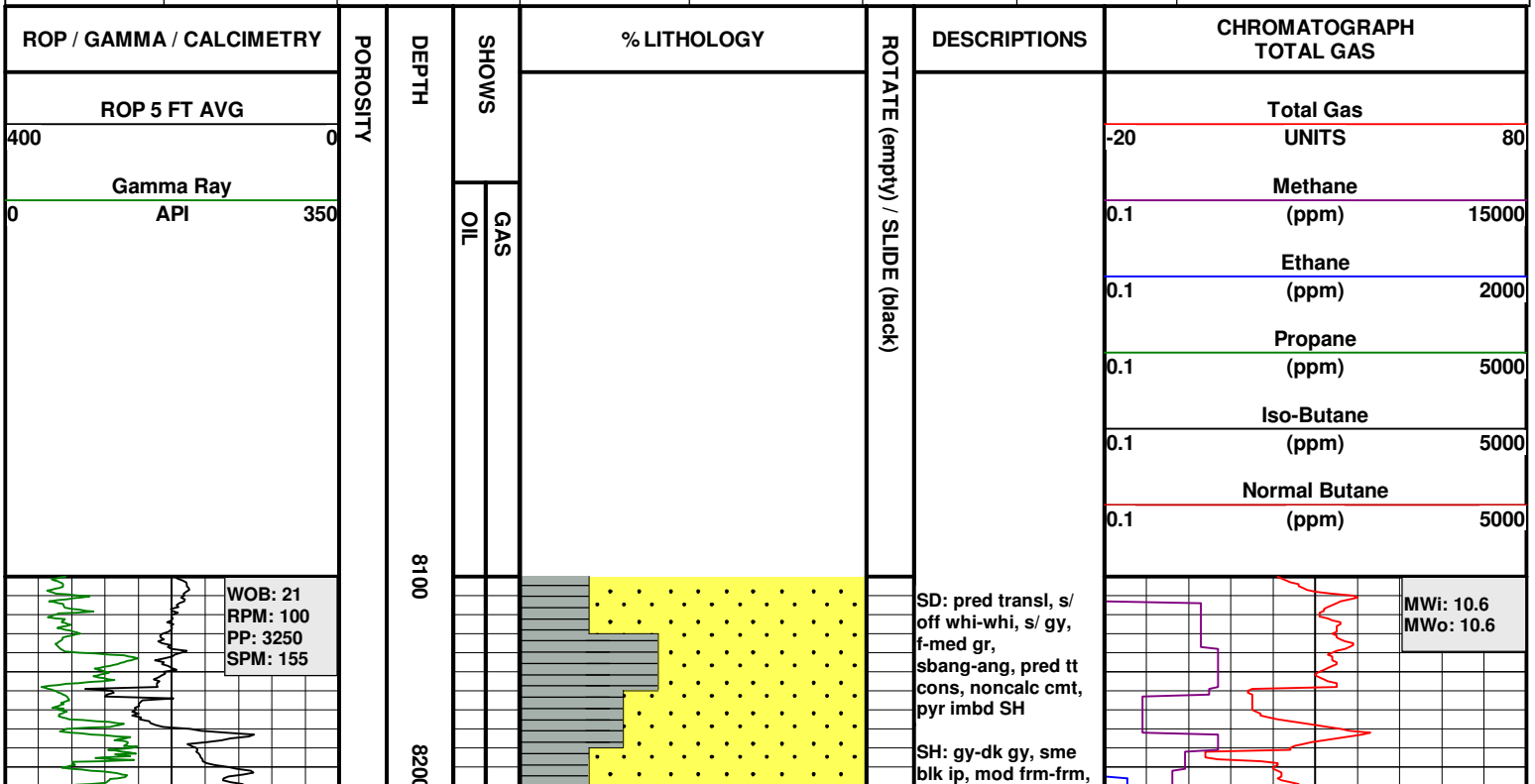
BOREHOLE RECORD

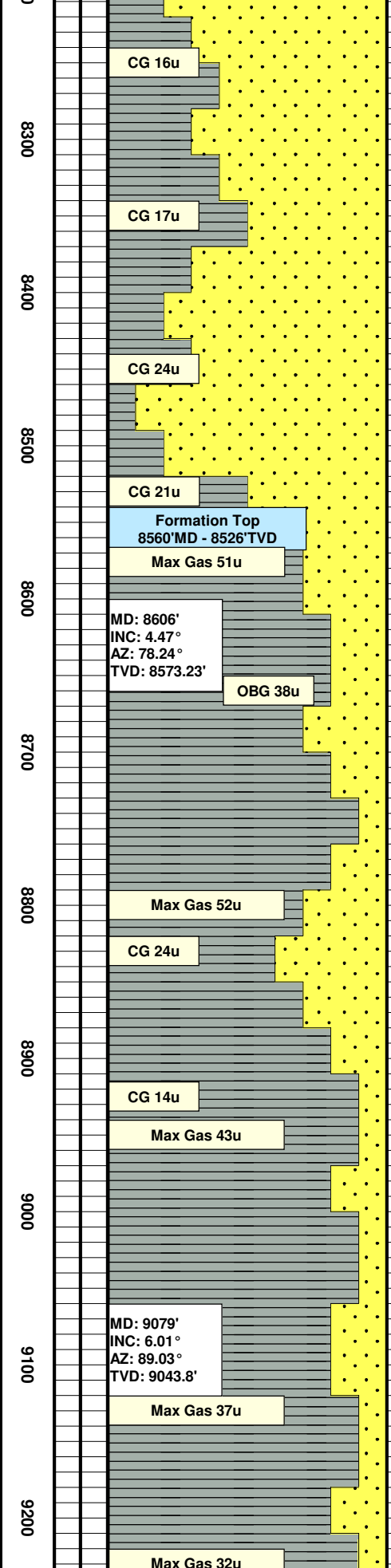
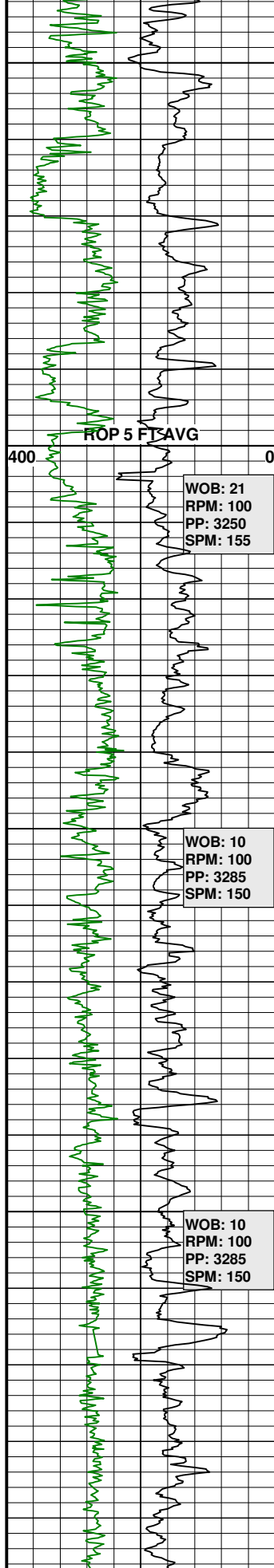
CASING RECORD

ABBREVIATIONS

HOLE SIZE	FROM	TO	SIZE	WGT.	FROM	TO
12.25"	Surface	3,570'	9.625"	36.0	Surface	3,570'
8.75"	3,570'	12,525'	7.00"	26.0	Surface	12,525'

BG	Background Gas
CG	Connection Gas
CT	Carbide Test
DBG	Drilling Background Gas
DC	Depth Correction
DG	Drilling Gas
MWi	Mud Weight In
MWo	Mud Weight Out
NB	New Bit
NR	No Mud Returns
PPM	Parts Per Million
STG	Short Trip Gas
SVG	Survey Gas
TG	Trip Gas





s/ sli hd, blk, chnky, slty, s/ aren ip, noncalc

SD: pred transl, s/ off whi-whi, s/ gy, f-med gr, sbang-ang, pred tt cons, noncalc cmt

SH: gy-dk gy, sme blk ip, mod frm-frm, s/ sli hd, blk, chnky, slty, s/ aren ip, noncalc

SD: pred transl, s/ off whi-whi, s/ gy, f-med gr, sbang-ang, pred tt cons, noncalc cmt

SH: med gy-dk gy, blk, chnky, s/ plty ip, mod frm-frm, s/ sli hd ip, pred v aren, s/ sli aren, interlam, sli calc-noncalc

SD: gy, f-med gr, sbang-ang, lsly cons, s/ tt cons, mod srtd, arg ip, tr mtl shavs

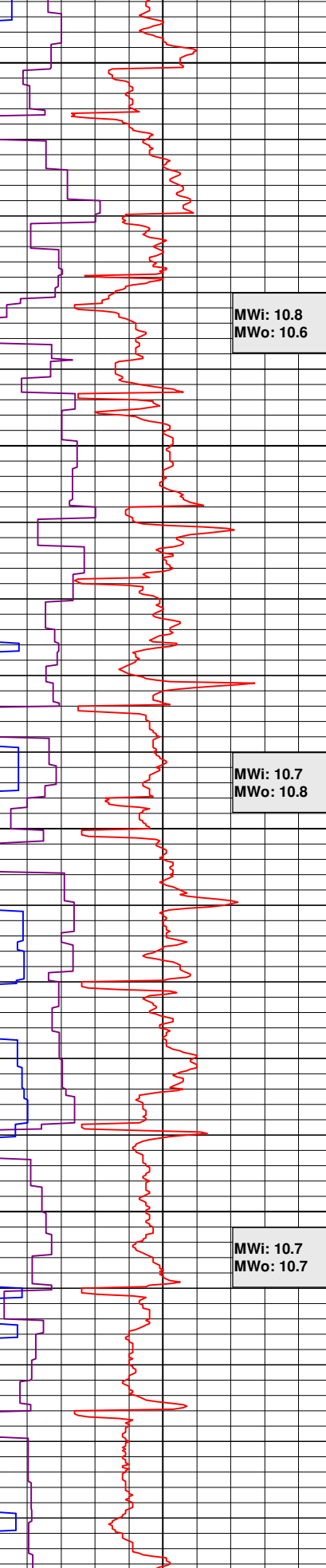
SH: med gy-dk gy, blk, chnky, s/ plty ip, mod frm-frm, s/ sli hd ip, aren, s/ rthy ip, sli calc-noncalc

SD: gy-med gy, med gr, sbang-ang, pred lsly cons, s/ tt cons, mod-prly srtd, arg ip, tr mtl shavs

SH: med gy-dk gy, blk, chnky, s/ plty ip, mod frm-frm, s/ sli hd ip, aren, s/ rthy ip, sli calc-noncalc, tr mtl shavs

SH: med gy-dk gy, blk, chnky, s/ plty, s/ flky, mod frm-frm, s/ brit ip, aren ip, noncalc, tr mtl shavs

SD: gy-med gy, f-med gr, sbang-ang, lsly cons, s/ tt cons, mod srtd, arg ip, tr mtl shavs



WOB: 20
 RPM: 100
 PP: 3750
 SPM: 150

9300

MD: 9079'
 INC: 6.01°
 AZ: 89.03°
 TVD: 9043.8'

SH: med-lt gy, occ
 dk gy, blk, chnky,
 s/ plty, s/ flky, sli brit
 ip, v sli aren ip,
 noncalc, tr mtl
 shavs

SD: gy-med gy, m
 gr, sbang-ang, v w
 cons w/ calc cmt,
 mod srted, arg ip,
 glauc, tr mtl shavs

MWi: 10.9
 MWO: 10.8

Gamma Ray		
0	API	350
ROP 5 FT AVG		
400		0
ROP / GAMMA / CALCIMETRY		

POROSITY

DEPTH

GAS
OIL

SHOWS

% LITHOLOGY

ROTATE (empty) / SLIDE (black)

DESCRIPTIONS

Normal Butane		
0.1	(ppm)	5000
Iso-Butane		
0.1	(ppm)	5000
Propane		
0.1	(ppm)	5000
Ethane		
0.1	(ppm)	2000
Methane		
0.1	(ppm)	15000
Total Gas		
-20	UNITS	80
CHROMATOGRAPH TOTAL GAS		